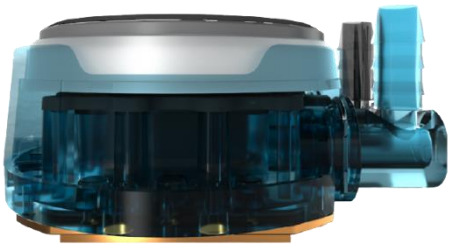




Cooler Master's MasterLiquid PL240 Flux White Edition is the new colorway of our Flux Series enhanced performance cooling. The dual chamber pump has further honed flow and pressure to target hot spots for rapid and precise heat dissipation. Surface area of the copper base and microchannels have been calculated for a superior heat transfer ratio. Equipped with new fan blades with an interconnecting loop delivers high speed performance, with the fan fine tuned to produce an optimized noise output. It also integrates new Addressable Gen 2 RGB for support with major motherboard manufactures, customizable with both the included Addressable Gen 2 RGB controller and Cooler Master's MasterPlus+ software.

MASTERLIQUID PL240 FLUX



Dual Chamber Pump

New Compact Performance Dual Chamber pump with optimized water flow and pressure for enhanced efficiency.



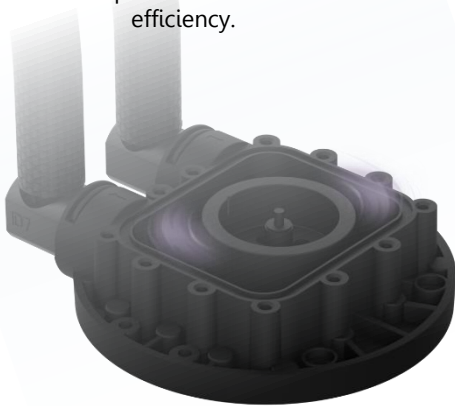
Enhanced Air Balance Fan Blades

120 mm square frame ARGB fan tweaked with inter-connecting air balance fan blades designed for PL-Flux Series.



Slim & Sleek Radiator

Low profile radiator with ideal fin density coupled with our Radiator fans for swift heat dissipation.

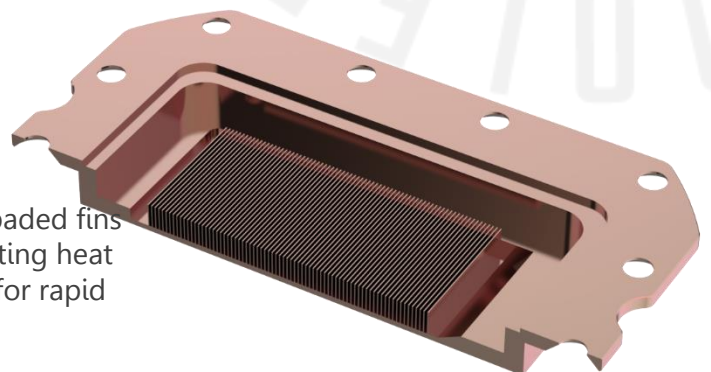


Superior Performance Ratio

Copper base plate calculated to precision with thinly spaded fins maximizing number of microchannels effectively targeting heat spots. Large surface area with optimal base thickness for rapid heat transfer.

Ultimate Heat Exchange

High speed motor utilizing a ceramic bearing impeller forces balanced water flow to and from the radiator for ultimate efficiency of heat exchange.



PL-Flux specific fans

Inter-connecting air balance fan blades increased sturdiness and stability operating steadily at high speed. Angled inner rim of fan frame increasing intake of air, at the same time gap between from and blades creating greater air pressure.

Performance Dual Chamber – Optimized flow and pressure targeting hot spots for precision heat dissipation

Superior Performance Ratio - Combined copper base and microchannel to surface area refined for ultimate heat transfer maximization

Radiator Fan Enhancement - Enhanced fan blades with interconnecting loop delivers high speed performance

Fan Noise Calibration - Fine tuned fan engineering produces optimized noise output

Dual Loop ARGB Pump Lighting - Addressable Gen 2 RGB ready for independent implemented customization

SPECIFICATIONS

Product Name	MasterLiquid PL240 FLUX White Edition
Product Number	MLY-D24M-A23PZ-RW
Exterior Color	White
RAM Clearance	N/A
Warranty	5 years

CPU Socket	Intel	Intel® LGA 1700 /1200 / 2066 / 2011-v3 / 2011 / 1200 / 1151 / 1150 / 1155 / 1156 socket
	AMD	AMD® AM5 / AM4 / AM3+ / AM3 / AM2+ / AM2 / FM2+ / FM2 / FM1/TR4
Radiator	Material	Aluminum
	Dimensions (L x W x H)	277 x 119.6 x 27.2mm(10.9 x 4.7 x 1.07inch)
Pump	Dimensions (L x W x H)	89 x 75 x 40 mm (3.5 x 2.95 x 1.57 inch)
	MTTF	>210,000 hours
	Noise Level (Max)	15 dBA
	Connector	4-Pin
	Rated Voltage	12 VDC
	Power Consumption	6 W

Fan	Dimensions (L x W x H)	120 x 120 x 25 mm(4.7 x 4.7 x 1 inch)
	Quantity	2 Pcs
	LED Type	Addressable Gen 2 RGB
	Speed (RPM)	0~2300 ±10%
	Airflow (Max)	122.96 m³/h (72.37 CFM)
	Noise Level (Max)	32dB(A)
	Pressure (Max)	2.96 (mmH2O)
	Bearing	Oil Reflow Bearing System
	MTTF	>160,000 hours
	Power Connector	4-Pin PWM
	Rated Voltage	12 VDC
	Rated Current	0.15A
	Safety Current	0.3A

PACKING INFORMATION

EAN code	4719512131961
UPC code	884102104282
Net weight	1.430kg
Gross weight	2.578kg
Package dimension (L x W x H)	34.8 X 28.5 X 14.7 cm
Carton dimension (L x W x H)	58.5 x 46 x 37.2 cm
Units/CTN	6

Cont.	W/ Pallet	Carton/ Pallet	W/O Pallet
20'	1200	20	N/A
40'	2520	20	N/A
40 HQ	3024	24	N/A