

Sharkoon



V10000

MICRO ATX PC CASE

# Case Versions



**V1000**  
WINDOW



**V1000**



# Compact Design



## Power Supply Tunnel

Within the innovative power supply tunnel for micro-ATX cases, in addition to the power supply, two 3.5" or two 2.5" hard drives discreetly install into a movable HDD cage outside the direct field of view.



# Versatile Installation Options



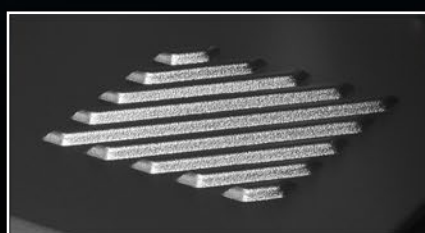
Mounting Bracket for up to Two 2.5" HDD/SSDs



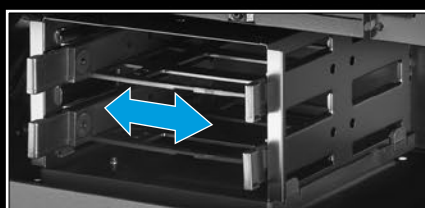
Practical Cable Pass-Throughs



Max. Height Radiator incl. Fan 5.9 cm



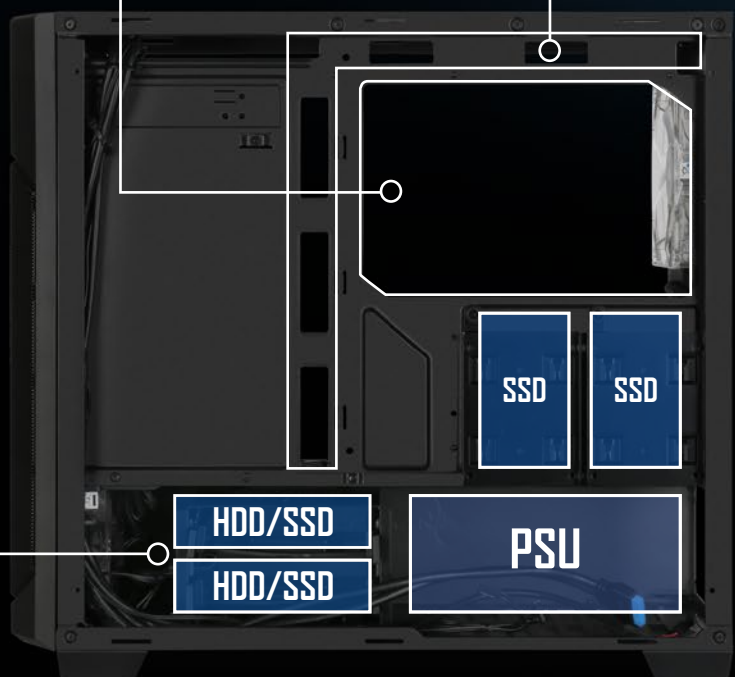
Air Vents for Optimal Cooling of Drives



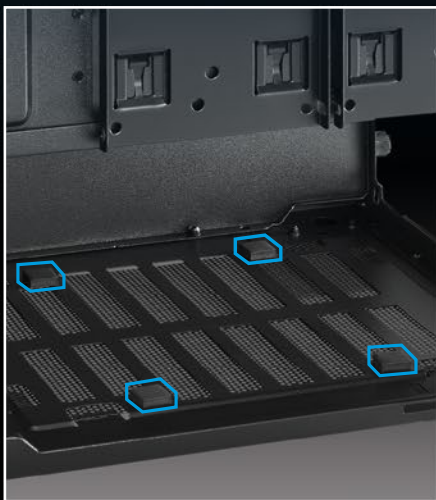
Practical Oval Hole Cutouts for Flexible HDD Cage Positioning

CPU Cooler Cutout

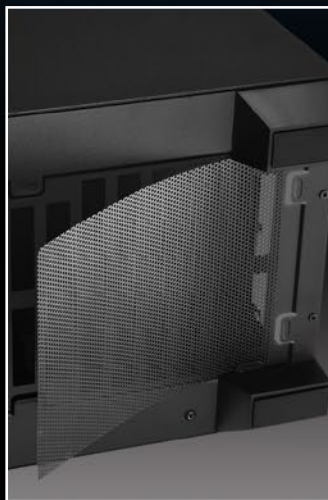
Practical Cable Pass-Throughs



# Sophisticated Solutions



Decoupled Power Supply Spacers



Removable Dust Filter on the Bottom Panel



Dust Filter with Magnetic Fastener on the Top Panel (V1000 Window)

# Optimum Airflow for Multimedia and Gaming



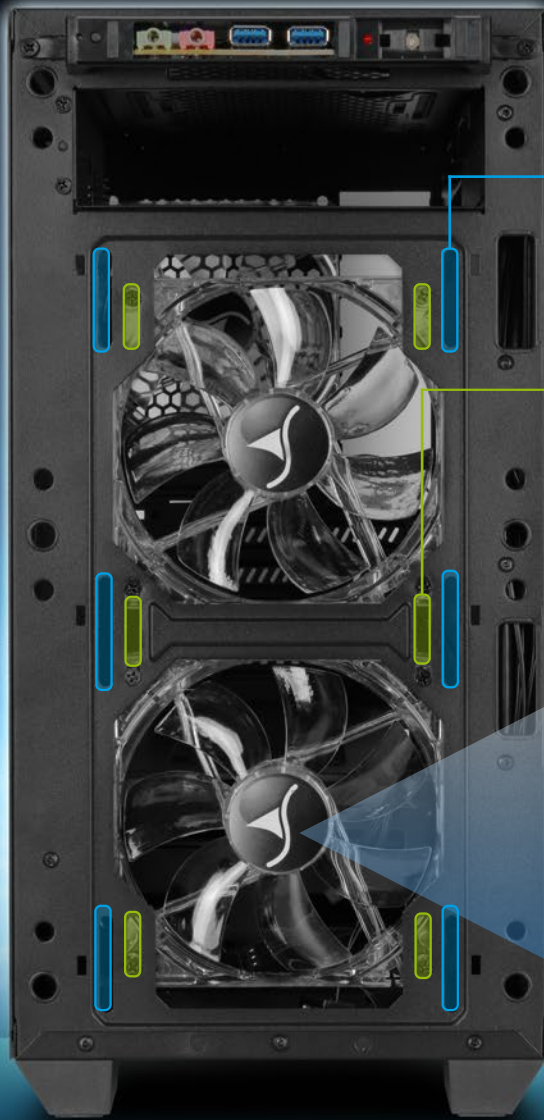
## Efficient Air Supply

The front panel of the V1000 and V1000 Window has a full mesh grill by the fan installation area. Through this, cold air travels through the case and cools the components within the case interior. The fan on the rear panel forces out warm air. For additional dissipation, the V1000 offers optional fan mounting options on the side panel. With the V1000 Window, up to three optional fans can install on the top of the case for additional cooling of high-performance components.



# Variable Fan Configuration

## Front Panel



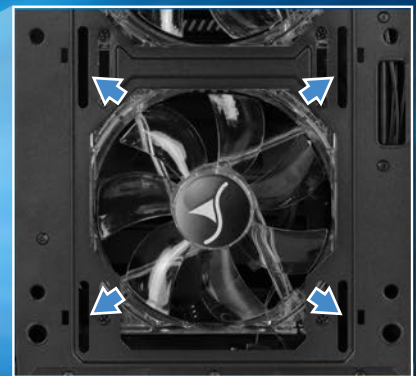
**2x 140 mm Fans**  
(Optional)

**1x 280 mm Radiator**  
(Optional)

**2x 120 mm Fans**  
(Only 1x Pre-Installed in V1000)

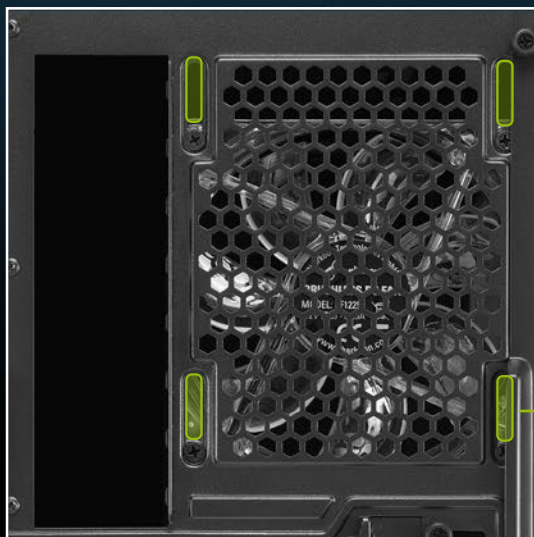
**2x 120 mm LED Fans**  
(Only Pre-Installed in V1000 Window)

**1x 240 mm Radiator**  
(Optional)



Oval Hole Cutouts for Flexible Fan Configuration

## Rear Panel

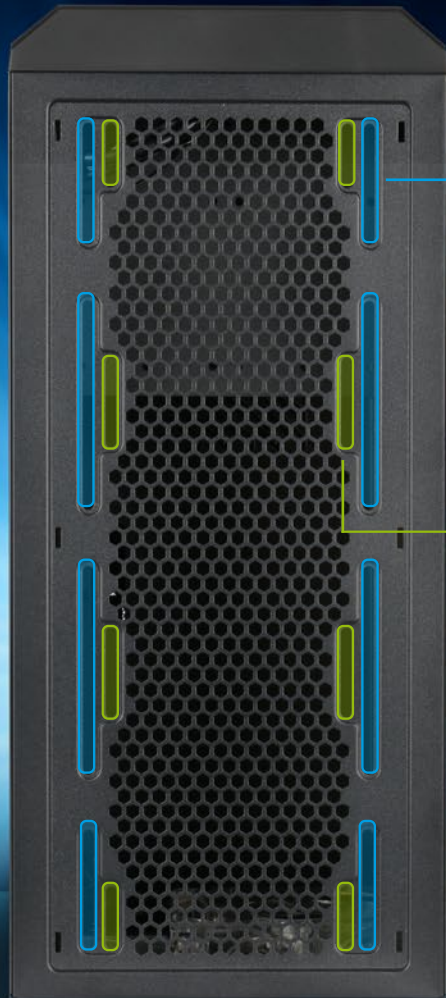


**1x 120 mm Fan**  
(Only Pre-Installed in V1000)

**1x 120 mm LED Fan**  
(Only Pre-Installed in V1000 Window)

# Variable Fan Configuration

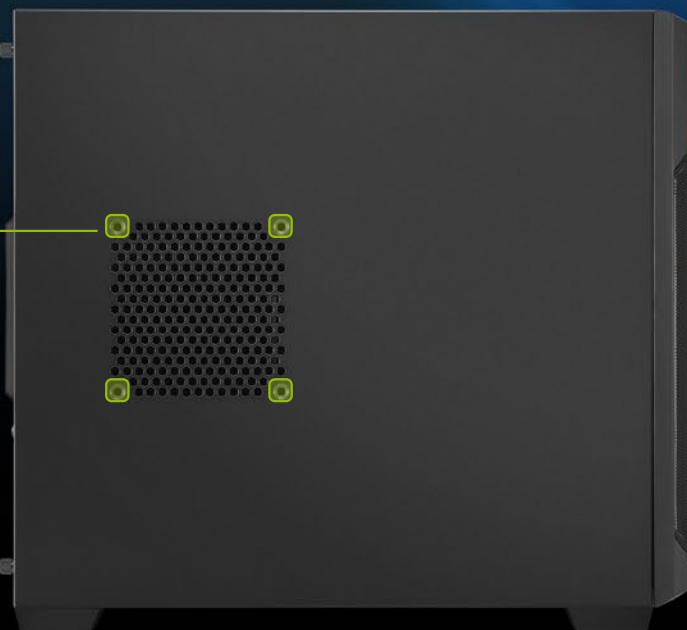
## Top Panel (V1000 Window)



**2x 140 mm Fans**  
(Optional)

**3x 120 mm Fans**  
(Optional)

## Side Panel (V1000)



**1x 120 mm Fan**  
(Optional)



# Specifications

## V1000

## V1000 WINDOW

### General:

■ Form Factor:	Micro-ATX	Micro-ATX
■ Expansion Slots:	4	4
■ Interior Painting:	✓	✓
■ Tool-Free Devices Installation:	✓	✓
■ Cable Management System:	✓	✓
■ Side Panel:	Metal	Acrylic
■ Color Versions:	Black	Black
■ Weight:	5.6 kg	5.2 kg
■ Dimensions (L x W x H):	45.0 x 19.5 x 40.2 cm	45.0 x 19.5 x 40.2 cm

### I/O:

■ USB 3.0 (Front):	2	2
■ Audio (Front):	✓	✓

### Drive Bays:

■ 5.25" or 3.5" External:	1	1
■ 5.25" to 3.5" Bay Cover:	1	1
■ 3.5" or 2.5":	2	2
■ 2.5":	2	2

### Fan Configuration:

■ Front Panel:	1x 120 mm Fan (Pre-Installed) or Radiator (Optional)	2x 120 mm LED Fans (Pre-Installed) or Radiator (Optional)
■ Side Panel:	1x 120 mm Fan (Optional)	-
■ Rear Panel:	1x 120 mm Fan (Pre-Installed)	1x 120 mm LED fan (pre-installed)
■ Top Panel:	-	3x 120 mm or 2x 140 mm Fans (Optional)

### Compatibility:

■ Mainboard:	Mini-ITX, Micro-ATX	Mini-ITX, Micro-ATX
■ Max. Length Graphics Cards:	40 cm	40 cm
■ Max. Height CPU Cooler:	15.5 cm	15.0 cm
■ Max. Length Power Supply:	24.0 cm	24.0 cm
■ Max. Height Radiator incl. Fan (Front):	5.9 cm	5.9 cm

### Package Contents:

V1000, Accessory Set, Manual

V1000 Window, Accessory Set, Manual

V1000

V1000 Window



### Shipment box

Packing Unit: 1  
Dimensions (L x W x H): 447 x 258 x 509 mm  
Weight: V1000: 6.29 kg / V1000 Window: 6.09 kg  
Customs tariff no.: 84733080  
Country of origin: China

[www.sharkoon.com](http://www.sharkoon.com)