

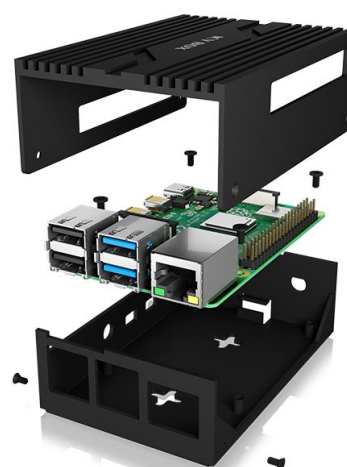


## ICY BOX IB-RP111

### Protective case for Raspberry Pi® 4

#### Key features

- Protective enclosure designed specifically for the Raspberry Pi® 4
- Elegant aluminium design paired with excellent workmanship
- Top of enclosure made of 4 mm thick aluminium with cooling fin design for best heat dissipation
- High-quality aluminium casing for heat dissipation, with opening for external antenna
- Includes two heat sinks and thermal pads to dissipate heat from the CPU and IC chipset to the aluminium case
- Cut-outs for all interfaces and connections already available in the side panels
- Allows easy access to power, video, audio, USB, LAN, microSD card
- Prepared for wall mounting



#### Packing content

1x IB-RP111, 2x heat sinks, 2 x four thermal pads for heat sinks  
2x five screws, 4x footpad stickers, 1x screw driver  
1x quick installation guide  
(Raspberry Pi® not included)

### Protective case for Raspberry Pi® 4

This Raspberry Pi® case is an aluminium case with a small form factor designed for performance and comfort. The case cools down the Raspberry Pi® CPU and IC chip thanks to its aluminium construction and included heat sinks with thermal pads. The case is acting as a passive heat sink that improves the single-board computer performances.

#### Technical data

<b>Model</b>	IB-RP111
<b>Article no.</b>	60655
<b>EAN code</b>	4250078169932
<b>Brand</b>	ICY BOX
<b>Colour</b>	Black
<b>Material</b>	Aluminium
<b>Raspberry Pi® Version</b>	4 - Model B
<b>Cooling</b>	Passive

#### System requirements

Compatible with Raspberry Pi® 4 Model B;  
Raspberry Pi® board and antenna not included



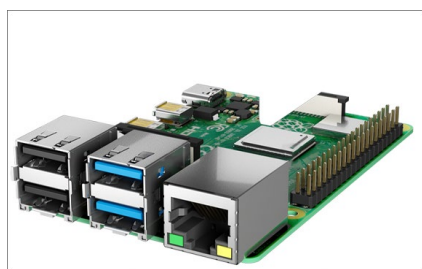
## ICY BOX **IB-RP111**

### Protective case for Raspberry Pi® 4



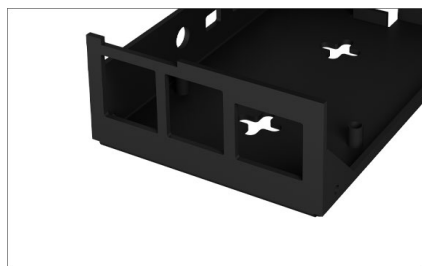
### Ready to work

Cut-outs for the Raspberry Pi® version 4 (Model B) connections already exist and so the Raspberry Pi® can be connected and used immediately after installation.



### HAT - stands for Hardware Attached on Top

Raspberry Pi® computers are ideally equipped for everyday use, but sometimes you may want to add an extra hardware controller. Thanks to their GPIO interface, most Pi® computers support an additional HAT module, but unfortunately not the corresponding cases. For the IB-RP111 this is no problem, because this case has a HAT function!



### "Another brick at the wall"

The mounting holes at the bottom of the case allow to mount the Raspberry Pi® either by fixing it to a VESA® mount using our VESA® adapter IB-RPA100, or by fixing it directly to the wall using two screws.

#### Logistical data

**Packing unit:** 20 pcs./carton  
**Total weight:** 4.7 kg/carton  
**Gross weight (with packing):** 0.211 kg  
**Net weight:** 0.117 kg

**Dimension/carton:** 500x220x220 mm  
**Dimension (with packing):** 35x100x200 mm  
**Dimension of article:** 65x95x35 mm  
**Country of origin:** China