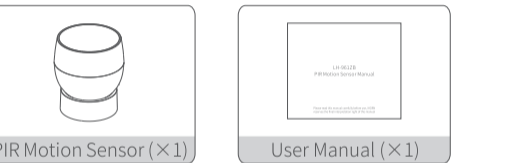


LH-961ZB PIR Motion Sensor Manual

Please read this manual carefully before use, iHORN reserves the final interpretation right of this manual

Packing List

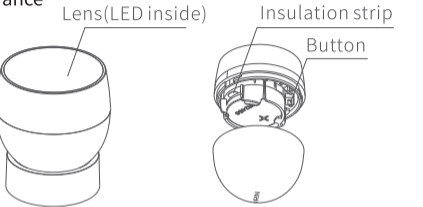
Make sure the device & accessories complete after unpack as below.



Batteries (battery pack or batteries installed) shall not be exposed to excessive heat such as sunshine, fire or the like.

Appearance & Feature

Appearance



Feature

The device is compact and beautiful, with flexible installation and the angle can be adjusted freely.

It can determine whether there are people moving in its detection area through the perception of people infrared light emitted by the body. It can realize different intelligent linkage by working with gateway.

- Wireless data transmission
- Digital temperature compensation
- Low power consumption, long battery life
- Magnetic base, flexible and convenient installation
- Periodic supervision
- Low voltage reminder

Product usage

Install iHORN Smart Life App

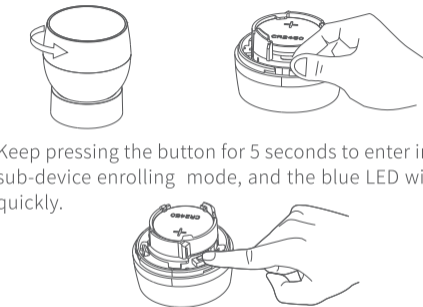
Scan the QR code below to download the "iHORN Smart Life" App.

Or search for " iHORN Smart Life " in App Store or Google Play to download and install, and create a new account.



Add Device

1. Connect your phone to your home Wi-Fi.
2. Add gateway to the App according to the gateway user guide.
3. After the gateway is successfully added, open the "iHORN Smart Life" App, click to enter the gateway page, click "Add", select "PIR Motion Sensor", and follow the prompts for subsequent operations.
4. Turn counterclockwise to open the front cover of the product, remove the battery insulation strip, the blue LED will flash quickly, and the device automatically enters into the enrolling mode.



6. Click "Confirm indicator rapidly blink" in the APP, the gateway voice prompts to enter into the sub-device enrolling mode.

Reset the device first.

Power on the device and confirm that indicator light rapidly blinks



Resetting Devices >

Confirm indicator rapidly blink

7. Wait for the PIR motion sensor to be added successfully.

Hereby, China Security & Fire IoT Sensing Co., Ltd. declares that the radio equipment type is in compliance with Directive 2014/53/EU. The full text of the EU declaration of conformity is available at the following internet address: <http://www.ihorn-tech.com/Service/Download.html>

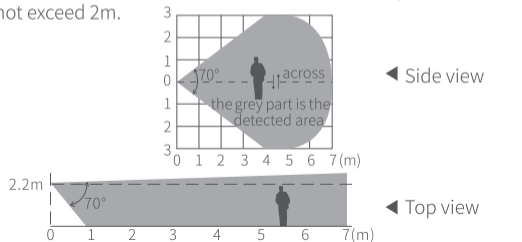
Special instructions:

- (1)The product comply with RF specifications and technical standards, which can be used in a small communication range;
- (2)The product comply with the DOC statement.

Manufacturer: China Security & Fire IoT Sensing Co., Ltd.
Address: The 4th Building, 1st floor of the 5th Building, New and High Technology Industrial Park, Guangming, Wandaiheng, Baoan, Shenzhen, China

Installation Instruction

1. Installation position should be chosen at the area where the intruder may break into. Try to make the intruder cross the detection area. As shows in the figure. The product can be put on the desk, also can be stick to the wall through 3M glue. It is recommended that the installation height should not exceed 2m.



Notice

1. This product is indoor use only. Please follow the user guide to install and use correctly. Please do not touch the lens to avoid affecting the sensitivity of the product. If the lens needs to be cleaned, please remove the battery and wipe with a soft cloth and a little alcohol.
2. Avoid the device working under the environment where the temperature changes a lot. Installation location should avoid closing to air conditioners, electric fans, refrigerators, ovens and other things that can cause temperature changes, and avoid direct sunlight on the product.
3. There should be no object shielding in front of the product to avoid affecting the detection result.
4. Building barriers (such as walls) will shorten the distance of wireless communication.

5. This product can reduce the accident happening, but can't make everything alright. For your safety, except use this product correctly, please improve our vigilance in our daily life, strengthen the sense of its safety precaution, and maintain it regularly.
6. Please remove the battery and keep safe, if you don't use this product for a long time.

Function Instruction

1. This product shall be used with a gateway. When using this product for the first time or replacing the gateway, it shall be enrolled with a gateway.
2. Please follow the steps of adding sub-devices to add this product to the gateway.
3. Double-click the product button to enter the test mode, under which the product is always in the state of triggering. If there is no trigger within five minutes, the product will enter the working mode. After each trigger in working mode, it will enter a minute sleep state and then enter working mode again.
4. This product has the function of low voltage reminder. When the battery voltage of the product is low, the sensor will send low voltage reminder to the gateway.

Technical Parameter

Wireless protocol	ZigBee 3.0
Transmit frequency	2.4000~2.4835GHz
Working voltage	DC3V(CR2450)
Static current	$\leq 10\mu A$
Working temperature	-10°C~+55°C
Working humidity	$\leq 95\%RH$
Detection distance	7m
Detection angle	70°
Installation height	2.2m
Battery life	1year(trigger 30 times a day)
Dimension	$\phi 40 \times 48mm$

Restore Factory Setting

When the device is powered on, the blue LED will flash quickly after pressing the button for 5 seconds, and the sensor will automatically enter into enrolling after restore factory setting.

Guarantee

Dear customer :

Thank you for choosing the equipment. Please read the instruction carefully before installation:

1. Our guarantee time is one year from the date you bought. Under the condition of correct operation following the manual, if fault happens during the warranty period, we'll repair for free. If fault happens in seven days, we can change for you for free.
2. The following conditions are not covered by the warranty. We will charge the repair if there are below conditions during warranty period:
 - The false caused by wrong operation or using environment.
 - The other faults that are not caused by our design, technology, quality and manufacturing.
 - Fault caused by working with the third party products, software and so on.

- Improper installation, misuse, unauthorized repair, modification, accident, force majeure event or other external cause of failure or defect.
 - Product has exceeded warranty period.
- The final interpretation right belongs to China Security & Fire IoT Sensing Co., Ltd.

Caution

- Risk of explosion if the battery is replaced by an incorrect type;
- Disposal of a battery into fire or a hot oven, or mechanically crushing or cutting of a battery, that can result in an explosion;
- Leaving a battery in an extremely high temperature surrounding environment that can result in an explosion or the leakage of flammable liquid or gas;

- A battery subjected to extremely low air pressure that may result in an explosion or the leakage of flammable liquid or gas.

Warning

- Do not ingest battery, Chemical Burn Hazard;
- This product contains a battery. If the battery is swallowed, it can cause severe internal burns in just 2 hours and can lead to death;
- Keep new and used batteries away from children;
- If the battery compartment does not close securely, stop the product and keep it away from children. If you think batteries might have been swallowed or placed inside any part of body, seek immediate medical attention.