



Make It Yours.

HYPER 212 LED TURBO ARGB

RR-212TK-18PA-R1



FEATURES

Mini Addressable RGB LED Controller-

Included Mini ARGB controller gives you versatility for your favorite color arrays.

Premium Aluminum Black Top Cover - Black aluminum top cover offers a premium finish

Dual SickleFlow 120 ARGB Fan - Redesigned curved blades and frame optimizes airflow and air pressure

Direct Contact Technology - Direct Contact Technology using 4 copper heat pipes delivers exceptional heat dissipation

Precise Combination of Air Flow and Heatsink -

Stacked-fin array provides low airflow resistance allowing cooler air flow through the heatsink

Aluminum Black Top Cover and Push-and Pull Setup

The Hyper 212 LED Turbo ARGB showcases our upgraded SickleFlow 120 ARGB fans with a dual fan setup for Push-Pull configuration. The fans boast an upgrade fan blade and frame design to enhance cooling capabilities while maintaining silent operation. With Addressable RGB and included mini addressable RGB controller certified for compatibility with various ARGB motherboards, it adds the touch of vibrancy to your build. Complimenting the aesthetics, it is designed with the jet black aluminum top cover for a premium finish. Its 4 heat pipes using Direct Contact Technology ensures a smooth contact surface to provide exceptional cooling efficiency.

SPECIFICATIONS

Product Name		Hyper 212 LED Turbo ARGB
Product Number		RR-212TK-18PA-R1
Exterior Color		Silver & Black
CPU Socket	Intel	LGA 2066 / 2011-v3 / 2011 / 1200 / 1151 / 1150 / 1155 / 1156 / 1366
	AMD	AM4 / AM3+ / AM3 / AM2+ / AM2 / FM2+ / FM2 / FM1
Heatsink	Dimensions (L x W x H)	120 x 110 x 159 mm (4.7 x 4.3 x 6.3 inch)
	Material	Copper & Aluminum
	Heat pipes	4
Fan	Dimensions (L x W x H)	120 x 120 x 25 mm (4.7 x 4.7 x 1 inch)
	Quantity (pcs)	2 pcs
	LED Type	ARGB
	Speed (RPM)	650 ~ 1800 RPM (PWM) ± 5%
	Airflow (CFM)	62 CFM (Max)
	Noise Level (dBA)	8 ~ 27 dBA
	Pressure (mmH2O)	2.5 mmH2O (Max)
	MTTF	160,000 hours
	Power Connector	4-Pin (PWM)
	Rated Voltage (VDC)	12 VDC
Rated Current (A)	0.15A	
Warranty		2 years

PACKING INFORMATION

EAN code	4719512110157
UPC code	884102082467
Net weight	0.83 kg
Gross weight	1.07 kg
Package dimension (L x W X H)	658 x 325 x 240 mm
Carton dimension (L x W x H)	157 x 129 x 228 mm
Units/CTN	10

Cont.	W/ Pallet	Carton/ Pallet	W/O Pallet
20'	3200	42	N/A
40'	6400	42	N/A
40 HQ	7200	48	N/A



Make It Yours.

FEATURES & SYSTEM REQUIREMENTS



Mini Addressable RGB LED Controller

Included Mini ARGB controller gives you versatility for your favorite color arrays.



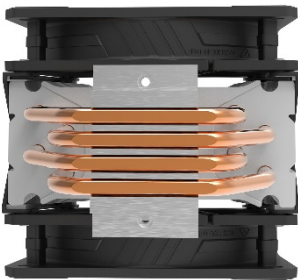
Dual SickleFlow ARGB Fan

Redesigned curved blades and frame optimizes airflow and air pressure



Premium Aluminum Black Top Cover

Black aluminum top cover offers a premium finish



Direct Contact Technology

Direct Contact Technology using 4 copper heat pipes delivers exceptional heat dissipation