

FUJIFILM

instax SQUARE Link

Smartphone Printer

User's Guide (Full version)



Table of Contents

Before Use	3
Notes on Disposing of the Printer	3
Part Names.....	3
Installing the App.....	4
Charging the Battery	4
LED charging status indicator	4
Loading/Unloading the “instax SQUARE” Film Pack	5
Loading a Film Pack.....	5
Unloading a Used Film Pack	5
Turning the Printer on/off	6
Printer Status – LED Light Indicator	6
Connecting and Printing.....	6
When connecting to the printer for the first time	6
When the Printer and Smartphone are Already Connected.....	9
Reprinting an Image	10
Taking a Photo with the App.....	11
Enjoying AR Print and INSTAX Connect.....	11
Specifications*	11
Troubleshooting	12
IMPORTANT SAFETY NOTICE	13
Simple printer care	13
Bluetooth® Devices: Cautions.....	15

Independent JPEG Group (IJG) Licenses

This software is based in part on the work of the Independent JPEG Group.

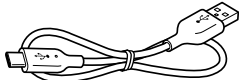
© 2022 FUJIFILM Corporation. All rights reserved.

Before Use

Before using the printer, check the following has been included with your printer.

Supplied Accessories

- USB Type-C cable for charging (1)
- User's Guide (1)



(YR059291QAD0000)

❗ The battery is not fully charged at the factory, be sure to charge the battery before using the printer.

Notes on Disposing of the Printer

A built-in lithium-ion battery is used for this printer.

When you dispose of the printer, follow your local regulations and dispose of it properly.

Please refer to the supplied CONTACT INFORMATION sheet for inquiry.

If your country or region is not included in the sheet, please contact your local distributor.

CAUTION

Do not remove the built-in battery by yourself; otherwise, you may be injured.



Disposal of Electric and Electronic Equipment in Private Households

Disposal of used Electrical & Electronic Equipment
(Applicable in the European Union and other European countries with separate collection systems)

This symbol on the product, in the manual and in the warranty, and/or on its packaging indicates that this product should not be treated as household waste. Instead, it should be taken to an appropriate collection point for the recycling of electrical and electronic equipment.

By ensuring this product is disposed of correctly, you will help prevent potential negative consequences to the environment and human health, which could otherwise be caused by inappropriate waste handling of this product.

The recycling of materials will help to conserve natural resources. For more detailed information about recycling this product, please contact your local city office, your household waste disposal service or the shop where you purchased the product.

In Countries outside of EU: If you wish to discard this product, please contact your local authorities and ask for the correct way of disposal.



This Symbol on the batteries or accumulators indicates that those batteries should not be treated as household waste.

For customers in Turkey:

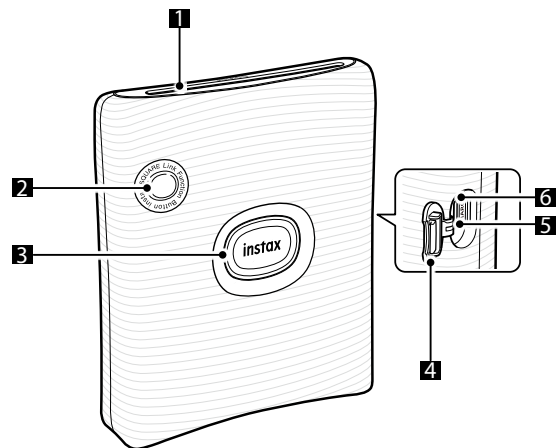
EEE Complies with Directive.

Read "IMPORTANT SAFETY NOTICE" (p. 13) for safety use.

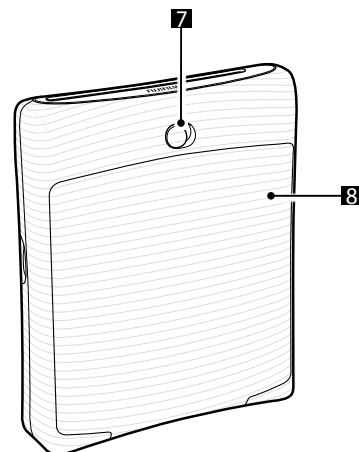
Part Names

❗ When using the printer for the first time, ensure that the battery is fully charged.

Front



Rear



- 1 Film ejection slot
- 2 Function button
- 3 Power button/LED*¹
- 4 USB port cover
- 5 Reset button*²
- 6 USB Type-C port
- 7 Film door lock
- 8 Film door

*¹ For details on the LED indication status, see pages 4 and 6.

*² If the printer does not work properly, press the reset button to reset the printer.

Installing the App

Please install the instax SQUARE Link app on your smartphone before using the printer.

- If you are using an Android OS smartphone, please search for the instax SQUARE Link app in the Google Play Store and install it.

*Requirements for Android OS smartphones: Android Ver. 7.0 or higher with Google Play Store installed

- If you are using an iOS smartphone, please search for the instax SQUARE Link app in the App Store and install it.

*Requirements for iOS smartphones: iOS Ver. 12.0 or higher

- Even if you have downloaded the app and your smartphone meets the above requirements, you may not be able to use the instax SQUARE Link app. This is dependent upon your smartphone model.

Access the instax SQUARE Link app download site for the latest information on system requirements.

Scan to download the instax SQUARE Link Smartphone App



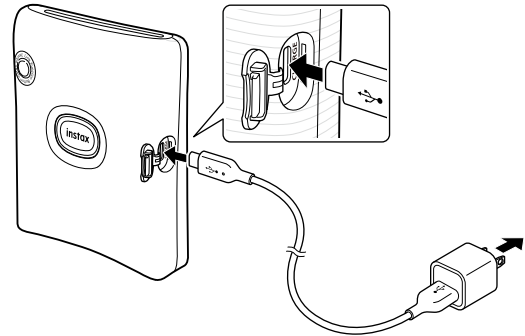
iOS



Android OS

The text QR Code itself is a registered trademark and wordmark of Denso Wave Incorporated.

Charging the Battery



Connect the printer using the supplied USB Type-C cable to a USB AC adapter (supplied with your smartphone) then connect the USB AC adapter to an indoor power supply.

- You can print an image while charging is in progress.
- Charging time is approximately 80 to 120 minutes.

LED charging status indicator

When the printer is turned on:

Indicator	Charging status
LED lights up white	Not charging or charging is complete
LED flashes white	Charging

When the printer is turned off:

Indicator	Charging status
LED is turned off	Not charging or charging is complete
LED flashes green	Charging

Check the charging status with your smartphone when connected to the app.

Charging from a PC:

- Connect the printer and PC directly. Do not connect via a USB hub or keyboard.
- If the PC goes into sleep mode while charging, charging is paused. To continue charging, exit sleep mode and then reconnect the USB Type-C cable.
- The battery may not be able to charge depending on the specifications, settings or conditions of the PC.

Notes

- The battery is not fully charged at the factory, be sure to charge the battery before using the printer.
- The battery cannot be removed.
- For notes about the battery, see "Simple printer care". (p.13)

Loading/Unloading the "instax SQUARE" Film Pack

Caution

Do not open the film door until you have used up all of the film; otherwise, the remainder of the film will be exposed and turn white, exposed film can no longer be used.

- When you load the film pack, never press the two rectangular holes on the back of the film pack.
- Never use a film pack beyond its shelf life; otherwise, it may damage the printer.

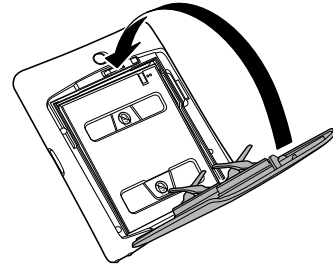
Use FUJIFILM instax SQUARE Instant Film only. instax mini Film and instax WIDE Film cannot be used.

Notes on the film pack

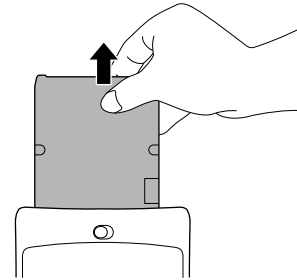
- Each FUJIFILM instax SQUARE Film pack contains one black film protective cover and 10 film sheets.
- Do not remove the film pack from its inner foil packaging until you are ready to load the film into the printer.
- The film cover is ejected automatically when the film door is closed.

For details, refer to the instructions and warnings on FUJIFILM instax SQUARE Instant Film packaging.

- 3 Close the film door.

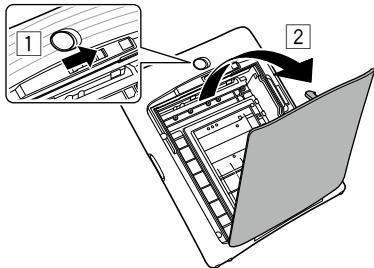


- 4 A black film cover will automatically be ejected, remove and dispose.

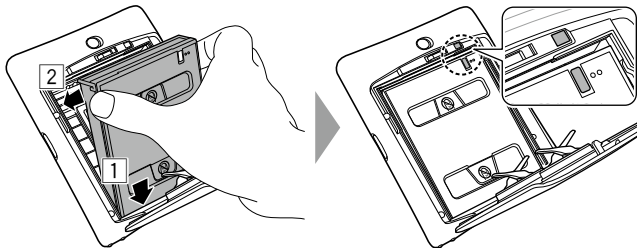


Loading a Film Pack

- 1 Slide the film door lock to unlock, then open the film door.



- 2 Insert film pack by aligning the yellow marks on the film pack and body of the printer.

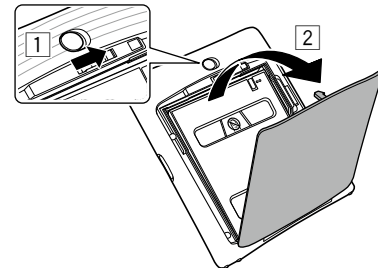


Note

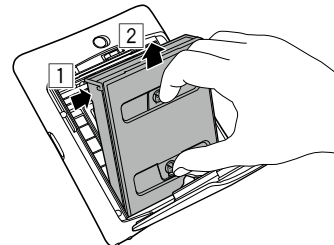
Be sure to align the yellow marks on the printer and on the film pack.

Unloading a Used Film Pack

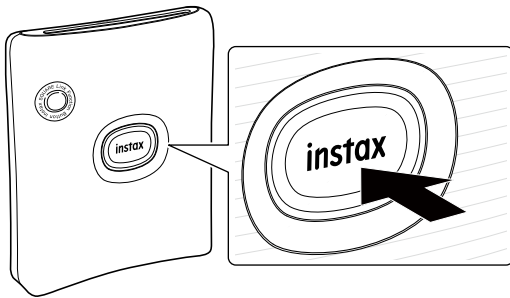
- 1 Slide the film door lock to open the film door.



- 2 Grasp the rectangular holes on the film pack and remove the empty film cartridge, and dispose.



Turning the Printer on/off



- Press and hold the Power button for approximately 1 second to turn the printer on or off.
- The LED lights up when the printer is turned on.
- The printer turns off automatically when not in use for a certain period of time.

Printer Status – LED Light Indicator

The LED light indicates the printer status.

Indication	Status
LED flashes blue	Firmware is being updated
LED flashes purple	Reprinting
LED lights up yellow for 3 seconds, then turns off	Low battery * If this phenomenon continues even after charging, there may be a malfunction. In such cases, contact a FUJIFILM authorized dealer.
LED continues flashing yellow	Print error occurred * If this phenomenon frequently occurs, there may be a malfunction. In such cases, contact a FUJIFILM authorized dealer.

Connecting and Printing

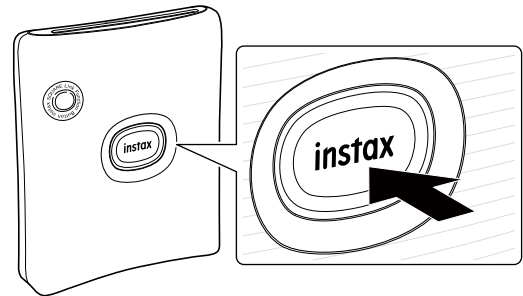
You can enjoy creating various prints such as adding text and applying filters to images with the functions of the instax SQUARE Link App.

For details on how to use the app, refer to the following site.
https://instax.com/square_link/

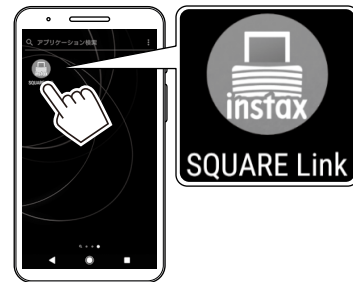
When connecting to the printer for the first time

- 1 Press and hold the Power button for approximately 1 second to turn the printer on.**

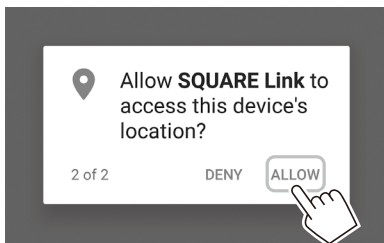
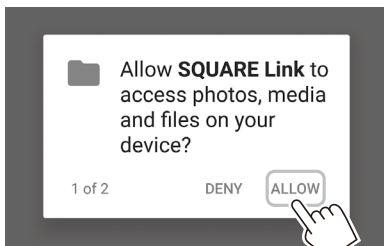
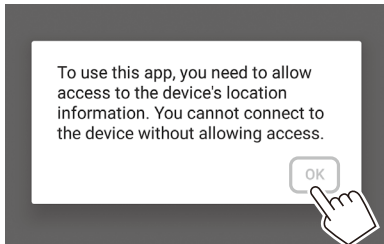
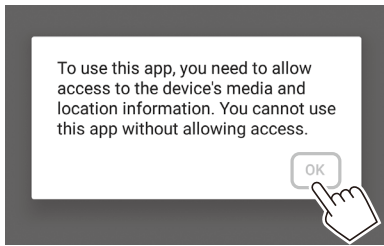
The LED lights up.



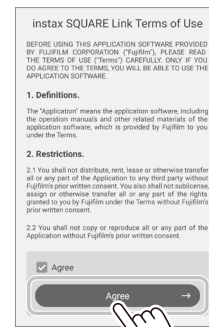
- 2 Open the “instax SQUARE Link” App.**



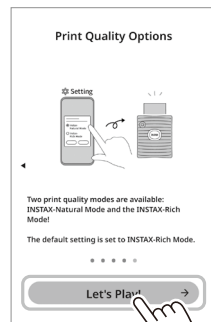
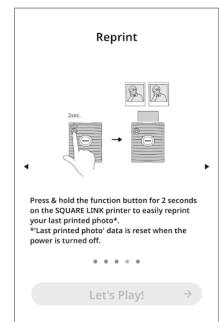
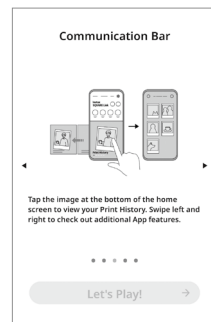
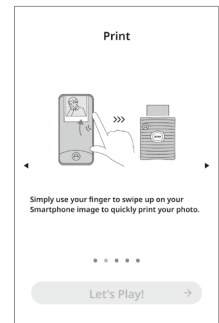
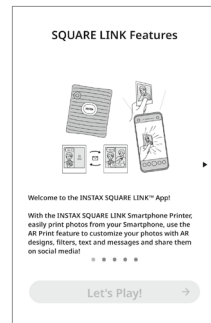
3 Setup the app as indicated below.



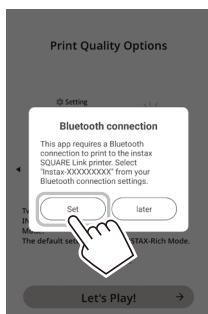
4 Read the terms of use, then put a checkmark in the [Agree] box, and tap [Agree ->].



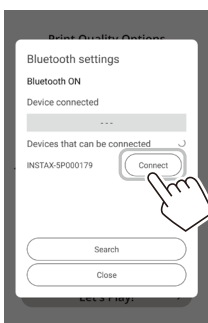
5 Quick instructions are displayed. Read the instructions and tap [Let's Play! ->].



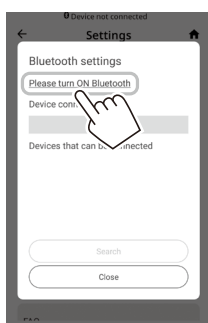
- 6 Tap [Set].**
[Bluetooth connection] can also be set in the process of printing.



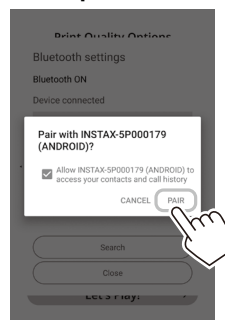
- 7 When a printer is detected, tap [Connect].**
If multiple printers are detected, select the printer to connect from the list.
The printer's identifier (device name) is located on the bottom of the printer.



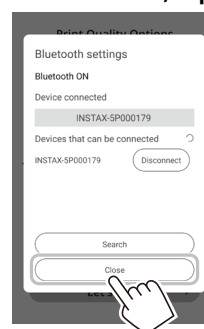
Note
When your smartphone's Bluetooth is switched off, tap [Please turn on Bluetooth] to turn the Bluetooth settings on.



- 8 When this message is displayed, put a checkmark in the check box and tap [PAIR].**



- 9 When a printer is connected, tap [Cancel].**




- 10 Select an image that you wish to print.**

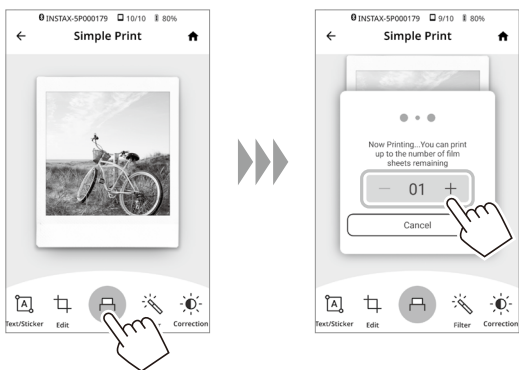


To edit images

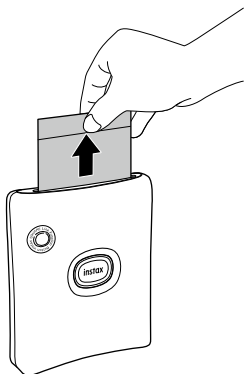
The following image editing options are available before printing.

	Enters text or adds a sticker on images.
	Zooms in/out and can rotate images.
	Applies a filter to images.
	Adjusts the brightness of images.

- 11 Tap  or swipe up on the screen.**
The printer will start printing.
You can also select the number of copies to print during image transfer.

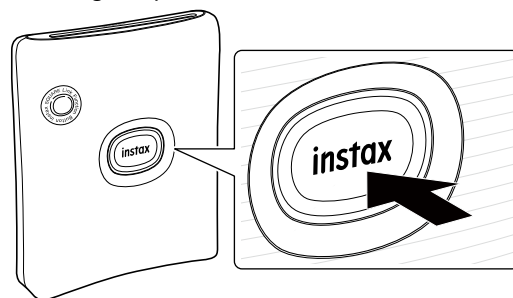


- 12 When the film has been ejected (the printer stops making a sound), hold the edge of the film and remove from the printer.**
You can view the number of prints remaining in the app.

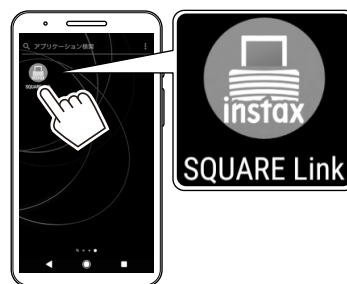


When the Printer and Smartphone are Already Connected

- 1 Press and hold the Power button for approximately 1 second to turn the printer on.**
The LED lights up.



- 2 Open the "instax SQUARE Link" App.**


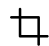




- 3 Select an image that you wish to print.**



To edit images

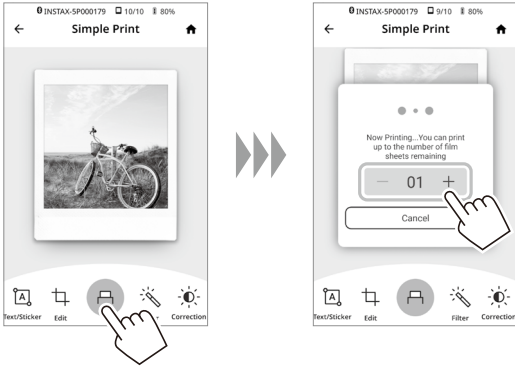
The following image editing options are available before printing.

	Enters text or adds a sticker on images.
	Zooms in/out and can rotate images.
	Applies a filter to images.
	Adjusts the brightness of images.

4 Tap  or swipe up on the screen.

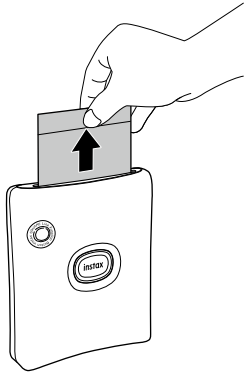
The printer will start printing.

You can also select the number of copies to print during image transfer.



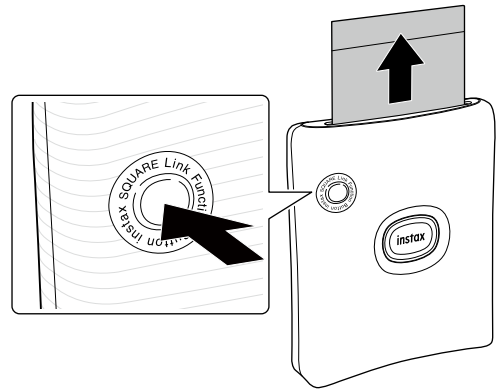
5 When the film has been ejected (the printer stops making a sound), hold the edge of the film and remove from the printer.

You can view the number of prints remaining in the app.



Reprinting an Image

The last image printed can be reprinted by pressing the function button for 2 seconds.



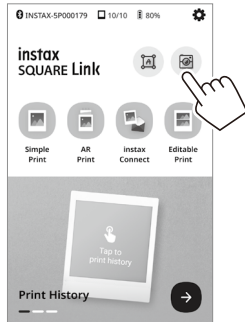
Note

- The last stored image that has been printed is deleted when the printer is turned off. In this case, you are able to print the image from the app.

Taking a Photo with the App

You can take a photo using the INSTAX Camera mode provided with the app. You can also use the following options: flash/switching between front and rear cameras/self-timer/date insertion. For details, see “FAQ” of the instax SQUARE Link app.

1 Enter INSTAX Camera mode.



2 Take a photo.



Enjoying AR Print and INSTAX Connect

You can freely create AR content using your favorite words and effects.

You can express what you like using prints with AR content. You can also print and send your precious memories with the INSTAX Connect function.

For more details, scan here.



https://instax.com/square_link/

Many more exciting features!

Specifications*

Recording method	3-color exposure with OLED
Film used	FUJIFILM instax SQUARE Instant Film (sold separately)
Number of films	10 films/pack
Image size	62 mm × 62 mm
Exposure pixel count	800 × 800 dots
Exposure resolution	12.5 dots/mm (318 dpi, 80 μm dot pitch)
Exposure gradation	RGB gradation of 256 colors
Interface	Bluetooth Ver. 4.2 (BLE)
Printable image format	JPEG, PNG, HEIF, DNG
Printing time	Image recording - photo output (fed out): Approximately 12 sec.
Possible number of printed images	Approximately 100 (from full charge; number of prints depends on the usage conditions.)
Power supply	Lithium ion battery (internal type: not removable)
Charging time	Approximately 80 to 120 minutes (depending upon environment temperature at time of charging)
Power consumption	Approximately 3 W
Operating environment	Temperature: +5°C to +40°C Humidity: 20% to 80% (no condensation)
Main unit dimensions	105 mm × 37.5 mm × 127.5 mm (excluding projecting parts)
Main unit mass Approximately	236 g (excluding film pack)
Supplied accessory	USB cable (Type-C, Length: 30 cm)

*The above specifications are subject to change for performance improvement.

Troubleshooting

Please check the following items before considering a problem to be a malfunction. If the problem persists even after taking action, please contact the FUJIFILM service center for repair in your country or visit the website below.

FUJIFILM website: <http://www.fujifilm.com/>

If the following problem occurs...

Problem	Possible causes and solutions
I cannot turn on the printer.	<ul style="list-style-type: none"> The battery may not be charged. Please charge the printer. You did not press the Power button for long enough. Press and hold the Power button for approximately 1 second.
The battery loses its charge quickly.	If you use the printer in a very cold environment, the battery will drain quickly. Please keep the printer warm before printing.
The power cut off during use.	The battery level may be low. Please charge the printer.
Charging does not start.	Make sure that the USB power adapter plug is properly connected to the power outlet.
The printer takes too long to charge.	At low temperatures, charging may take longer.
Charging stops during charging.	Charge the battery in a temperature range of +5°C to +40°C. If you cannot charge the printer in this range, contact your FUJIFILM dealer or support center.
The printer does not function normally.	<ul style="list-style-type: none"> There may be a temporary malfunction. Please press the reset button. If the printer still does not function normally, please contact our repair service center for repair. The battery may not be charged. Please charge the printer.
The film pack does not load or does not load correctly.	<ul style="list-style-type: none"> Please use FUJIFILM instax SQUARE Instant Film (other films cannot be used). Align the yellow mark on the film pack with the yellow alignment marker on the printer body, once aligned load the film into the printer.
The film does not print.	<ul style="list-style-type: none"> The film may be misaligned due to an impact such as vibration or dropping. Please load a new film pack. If the film is jammed, turn the printer off and turn it on again. If the problem persists, remove the jammed film and then load a new film pack.
Some or all of the finished prints are white.	Do not open the film door until all the film has been used up. If the film door is opened with film remaining, the film will be exposed and become white.

Problem	Possible causes and solutions
The print is uneven.	<ul style="list-style-type: none"> Do not shake, bend, fold or hold the print immediately after it is printed. Do not obstruct the film ejection slot.
I cannot reprint images.	The last stored image that has been printed is deleted when the printer is turned off.

IMPORTANT SAFETY NOTICE

This product has been designed to ensure the safety of the user when handled correctly, and in accordance with the User's Guide and the instructions provided. It is important that both the product and the "instax SQUARE" Film are handled properly and used only to print pictures as instructed in the User's Guide and in the "instax SQUARE" Film instructions. For future reference keep the User's Guide in a safe, easy to find place.

WARNING

This symbol indicates danger, which could result in injury or death. Please follow these instructions.

WARNING

- ⚠ If any of the following instances occur, immediately unplug the USB Type-C cable, turn the printer off and cease use.
 - The printer becomes hot, emits smoke, emits a burnt smell or is functioning abnormally.
 - The printer is dropped into water or any foreign objects enter the printer.
- ⚠ This device contains a built-in battery. Do not subject to heat, throw it into an open fire, drop or subject to impact. Doing so could cause the printer to explode.

WARNING

- ⚠ Never attempt to take this product apart. You may be injured.
- ⚠ If the printer is not functioning correctly, to avoid injury do not attempt to repair yourself.
- ⚠ If this product is dropped or damaged so that the internals are visible, do not touch it. Contact your FUJIFILM dealer.
- ⚠ Do not touch any parts within the inside of the back cover. This may cause injury.
- ⚠ Never get this product wet or handle it with wet hands. Doing so may result in an electric shock.
- ⚠ Promptly unplug the USB Type-C cable once battery is fully charged.
- ⚠ Keep out of the reach of small children. This product could cause injury in the hands of a child.



The "CE" mark certifies that this product satisfies the requirements of the EU (European Union) regarding safety, public health, environment and consumer protection. ("CE" is the abbreviation of Conformité Européenne.)

Hereby, FUJIFILM declares that the radio equipment type "FI017W" is in compliance with Directive 2014/53/EU.

For more information, access the website below.

https://instax.com/square_link/en/spec.html



The "UKCA" mark certifies that this product satisfies the requirements of Great Britain (England, Scotland, Wales) regarding safety, public health, environment and consumer protection.
*UKCA: UK Conformity Assessed.

Simple printer care

■ Handling the printer and battery

- CAUTION - Do not expose to excessive heat such as sunshine, fire or the like. This can result in an explosion or the leakage of flammable liquid or gas during use, storage, transportation or disposal.
- CAUTION - Do not dispose of a battery into fire or a hot oven. Do not mechanically crush or cut the battery. This can result in an explosion.
- CAUTION - Do not subject to extremely low air pressure at high altitude, this may result in an explosion or the leakage of flammable liquid or gas.

■ Printer care

1. **Do not open the film door until all film exposures have been used, doing so will prematurely expose the remaining film and render it unusable.**
2. Your printer is a fragile object. Do not expose it to water, sand or gritty materials.
3. Do not use solvent such as thinner or alcohol to remove dirt.
4. Keep the film chamber and printer interior clean to avoid damaging the film.
5. Do not leave your printer in direct sunlight or hot places such as the inside of a car. Do not leave the printer in damp places for prolonged periods.
6. Moth repellent gas such as naphthalene may affect your printer and prints. Take care to keep your printer and prints in a safe, dry place.
7. Note that the temperature range within which your printer can be used is +5°C to +40°C.
8. Take great care to ensure that printed materials do not violate copyright, image rights, privacy or other personal rights and do not offend public decency. Actions that violate the rights of others, are contrary to public decency or constitute a nuisance may be punishable by law or otherwise legally actionable.
9. This printer is designed for domestic/personal use. It is not suitable for commercial use.

■ Charging the Battery

- The battery is not fully charged during manufacture. Please charge the battery fully before first use.
- Charge the battery using the supplied USB Type-C cable. Charging times will increase at ambient temperatures below +10°C or above +35°C.
- Do not attempt to charge the battery at temperatures above +40°C or at temperatures below +5°C as the battery will not charge.

■ Battery Life

At normal temperatures, the battery can be recharged about 300 times. A noticeable decrease in the length of time the battery will hold a charge indicates that it has reached the end of its service life.

■ Caution: Handling the battery

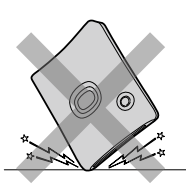
The battery and printer body may become warm to the touch after extended use. This is normal.

■ Certification marks acquired by the printer are located inside the film chamber.

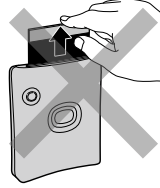
■ Cautions during printing



Do not shake the printer while printing.



Do not drop the printer while printing.



Do not cover the film ejection slot while printing.

■ "instax SQUARE" Film and print care

See FUJIFILM Instant Film "instax SQUARE" packaging for film use instructions. Follow all instructions for safe and proper use.

1. Keep the film in a cool place. Do not leave the film in a place where the temperature is extremely high (e.g. in a closed car) for many hours.
2. Do not puncture, tear, or cut the "instax SQUARE" film. If film becomes damaged, do not use.
3. When you load a film pack, use the film as soon as possible.
4. If the film has been kept in a place where the temperature is extremely high or low, bring it to room temperature before starting to print pictures.
5. Be sure to use the film before the expiration or "Use Before" date.
6. Avoid airport checked luggage scanning and other strong X-ray exposure. The effect of fogging, etc. may appear on unused film. We recommend that you carry the printer and/or the film onto the aircraft as carry-on luggage. (Check with each airport for more information.)
7. Avoid strong light, and keep the developed prints in a cool and dry place.
8. Do not puncture or cut the film as it contains a small amount of caustic paste (high alkaline). Never let children or animals put the film into their mouth. Also ensure that the paste does not come into contact with skin or clothes.
9. Should the paste inside the film comes into contact with skin or clothes, immediately wash off with plenty of water. If the paste comes into contact with the eyes or mouth, immediately wash the area with plenty of water and contact a doctor. Note that the alkaline inside the film remains active for about 10 minutes after the picture has been printed.

■ Cautions on handling the film and prints

For full details, refer to the instructions and warnings on the packaging of the FUJIFILM Instant Film "instax SQUARE".



Information for traceability in Europe

Manufacturer: FUJIFILM Corporation
 Address, City: 7-3, Akasaka 9-Chome, Minato-ku, Tokyo
 Country: JAPAN
 Authorized representative in Europe:
 FUJIFILM EUROPE GmbH
 Address, City: Balcke-Duerr-Allee 6, 40882 Ratingen
 Country: Germany
 Authorized Representative in UK:
 FUJIFILM UK Limited
 Fujifilm House, Whitbread Way, Bedford Bedfordshire MK42 0ZE
 Country: United Kingdom

Bluetooth® Devices: Cautions

IMPORTANT: Read the following notices before using the product's built-in Bluetooth transmitter.

■ **Use only as part of a Bluetooth network.**

FUJIFILM does not accept liability for damages resulting from unauthorized use. Do not use in applications requiring a high degree of reliability, for example in medical devices or other systems that may directly or indirectly impact human life. When using the device in computer and other systems that demand a greater degree of reliability than Bluetooth networks, be sure to take all necessary precautions to ensure safety and prevent malfunction.

■ **Use only in the country in which the device was purchased.**

This device conforms to regulations governing Bluetooth devices in the country in which it was purchased. Observe all location regulations when using the device. FUJIFILM does not accept liability for problems arising from use in other jurisdictions.

■ **Wireless data (images) may be intercepted by third parties.**

The security of data transmitted over wireless networks is not guaranteed.

■ **Do not use the device in locations subject to magnetic fields, static electricity, or radio interference.**

Do not use the transmitter in the vicinity of microwave ovens or in other locations subject to magnetic fields, static electricity, or radio interference that may prevent reception of wireless signals. Mutual interference may occur when the transmitter is used in the vicinity of other wireless devices operating in the 2.4 GHz band.

■ **The Bluetooth transmitter operates in the 2.400GHz – 2.4835GHz. The maximum radio-frequency power is 8.28 mW.**

■ **This device operates on the same frequency as commercial, educational, and medical devices and wireless transmitters.**

It also operates on the same frequency as licensed transmitters and special unlicensed low-voltage transmitters used in radio-frequency identification tracking systems for assembly lines and in other similar applications.

■ **To prevent interference with the above devices, observe the following precautions.**

Confirm that the radio-frequency identification transmitter is not in operation before using this device. If you notice that this device causes interference in low-voltage radio-frequency identification tracing systems, contact a FUJIFILM representative.

■ **The following may be punishable by law:**

- Disassembly or modification of this device.
- Removal of device certification labels.

■ **Trademark Information**

The Bluetooth® word mark and logos are registered trademarks owned by the Bluetooth SIG, Inc., and any use of such marks by FUJIFILM is under license.

If you have any inquiries about this product, please contact a FUJIFILM authorized dealer, or access the website below.
<http://www.fujifilm.com/>

FUJIFILM

FUJIFILM Corporation

7-3, AKASAKA 9-CHOME, MINATO-KU, TOKYO 107-0052, JAPAN