

**EU-4308**

# Quick Installation Guide

06-2017/ v1.0

---

## **Edimax Technology Co., Ltd.**

No. 278, Xinhu 1st Rd., Neihu Dist., Taipei City, Taiwan

Email: [support@edimax.com.tw](mailto:support@edimax.com.tw)

---

## **Edimax Technology Europe B.V.**

Fijenhof 2, 5652 AE Eindhoven, The Netherlands

Email: [support@edimax.nl](mailto:support@edimax.nl)

---

## **Edimax Computer Company**

3350 Scott Blvd., Bldg.15 Santa Clara, CA 95054, USA

Live Tech Support: 1(800) 652-6776

Email: [support@edimax.com](mailto:support@edimax.com)

<b>I. Product Information.....</b>	<b>1</b>
I-1. Package Contents .....	1
I-2. System Requirements.....	1
I-3. Safety .....	1
<b>II. Installation.....</b>	<b>2</b>
II-1. Windows.....	3
II-2. Mac OS.....	6

## **Multi-Language Quick Installation Guide (QIG) on the CD**

**Čeština:** Českého průvodce rychlou instalací naleznete na přiloženém CD s ovladači

**Deutsch:** Finden Sie bitte das deutsche S.A.L. beiliegend in der Treiber CD

**Español:** Incluido en el CD el G.R.I. en Español.

**Français:** Veuillez trouver l'français G.I.R ci-joint dans le CD

**Italiano:** Incluso nel CD il Q.I.G. in Italiano.

**Magyar:** A magyar telepítési útmutató megtalálható a mellékelt CD-n

**Nederlands:** De nederlandse Q.I.G. treft u aan op de bijgesloten CD

**Polski:** Skrócona instrukcja instalacji w języku polskim znajduje się na załączonej płycie CD

**Português:** Incluído no CD o G.I.R. em Portugues

**Русский:** Найдите Q.I.G. на русском языке на приложенном CD

**Türkçe:** Ürün ile beraber gelen CD içinde Türkçe Hızlı Kurulum Kılavuzu'nu bulabilirsiniz

**Українська:** Для швидкого налаштування Вашого пристрою, будь ласка, ознайомтесь з інструкцією на CD

# ***I. Product Information***

---

## **I-1. Package Contents**



***3-Port USB 3.0 Gigabit Ethernet Hub***



***CD-ROM***



***QIG***

## **I-2. System Requirements**

- Intel Premium III 1GHz (above or similar)
- 256MB RAM/CD-ROM
- 100MB Hard Disk Space (at least)
- USB Type C Port
- Windows XP/Vista/7/8/8.1/10 above, Mac OS 10.6 – 10.10 above, Linux Kernel 4.x/3.x/2.6x

## **I-3. Safety**

In order to ensure the safe operation of the device and its users, please read and act in accordance with the following safety instructions.

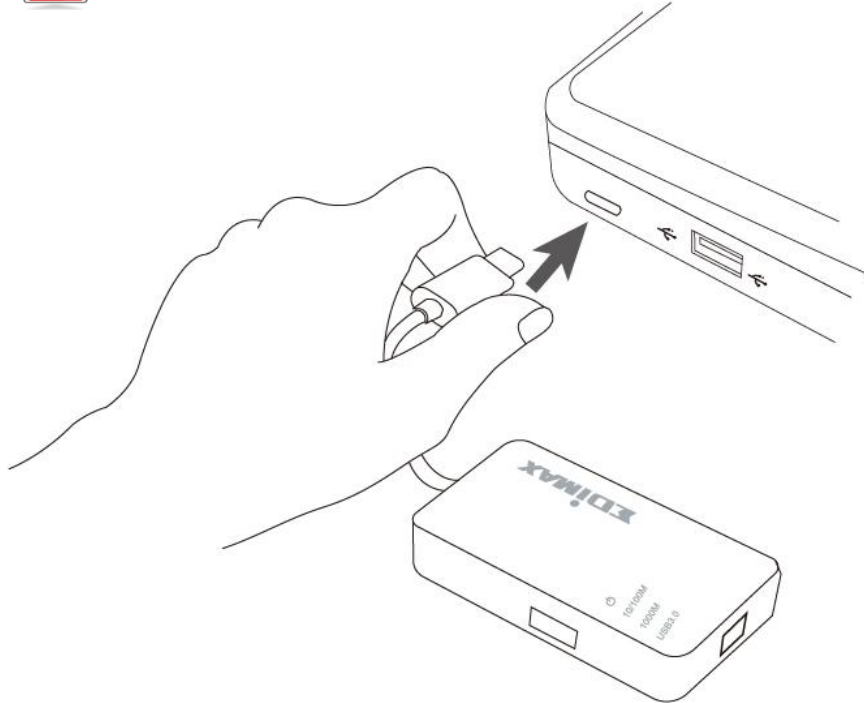
- 1.** The USB Fast Ethernet Hub is designed for indoor use only; do not place the USB Fast Ethernet Hub outdoors.
- 2.** Do not place the USB Fast Ethernet Hub in or near hot/humid places, such as a kitchen or bathroom.
- 3.** The USB Fast Ethernet Hub contains small parts which are a danger to small children under 3 years old. Please keep the USB Fast Ethernet Hub out of reach of children.
- 4.** There are no user-serviceable parts inside the USB Fast Ethernet Hub. If you experience problems with the USB Fast Ethernet Hub, please contact your dealer of purchase and ask for help.
- 5.** The USB Fast Ethernet Hub is an electrical device and as such, if it becomes wet for any reason, stop using it immediately. Contact an experienced electrical technician for further help.

## II. Installation

---

1. Switch on your computer and connect the Ethernet Hub to an available USB type C port of your computer.


 **Never use force to insert the USB adapter.**



2. Insert the included CD-ROM into the CD drive of your computer.

 **The setup wizard is also available for download from the Edimax website.**

3. For **Windows** users the setup wizard will open. For **Mac** users the CD's "Mac" folder will open.

 **If the CD doesn't auto-run or if you downloaded the setup wizard, please browse to the "Autorun" or "Mac" folder of the CD for Windows or Mac users respectively.**

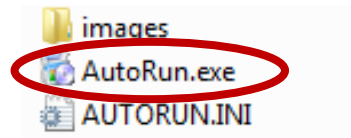
4. Please follow the instructions in the appropriate chapter for your operating system.

# II-1. Windows

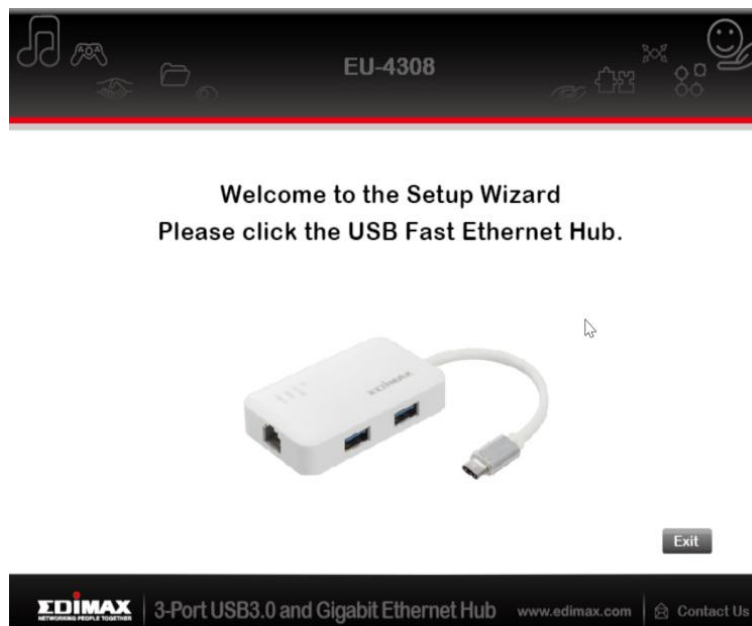
## Driver Installation



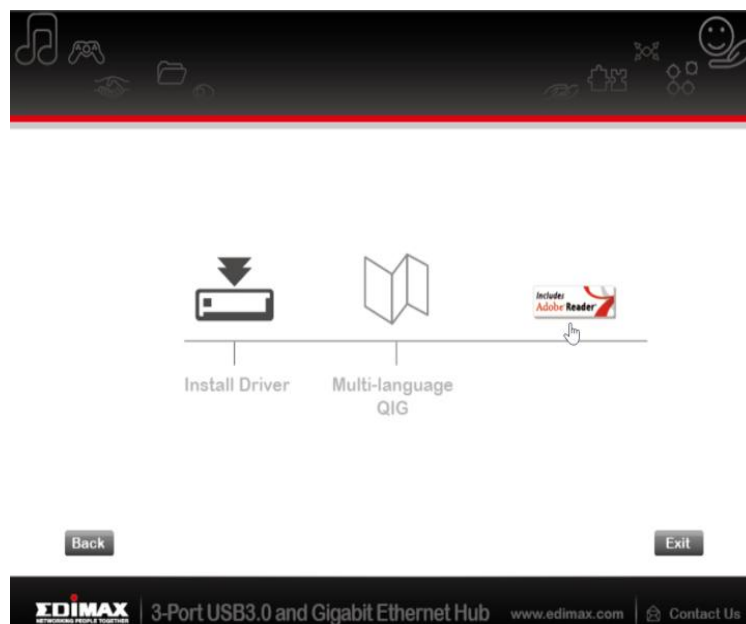
*If the CD didn't auto-run, please open the "Autorun.exe" file to start the setup wizard.*



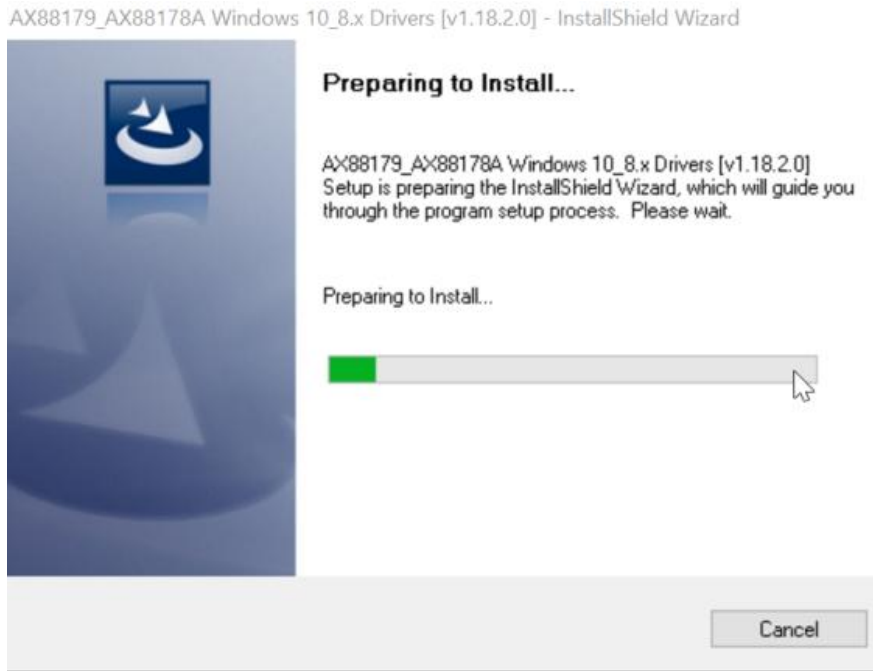
1. Click the USB Fast Ethernet adapter to continue.



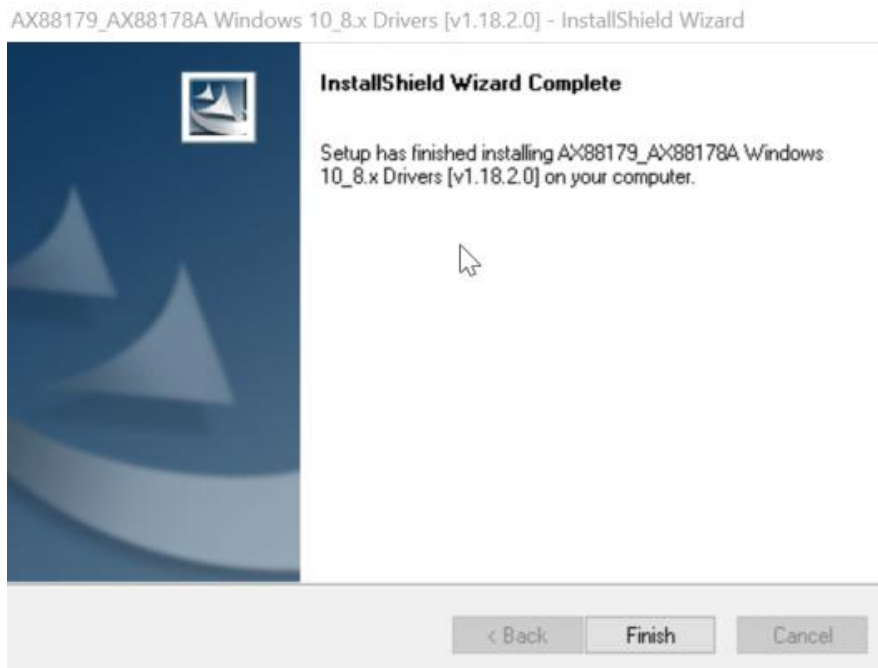
2. Click "Install Driver" to install the driver.



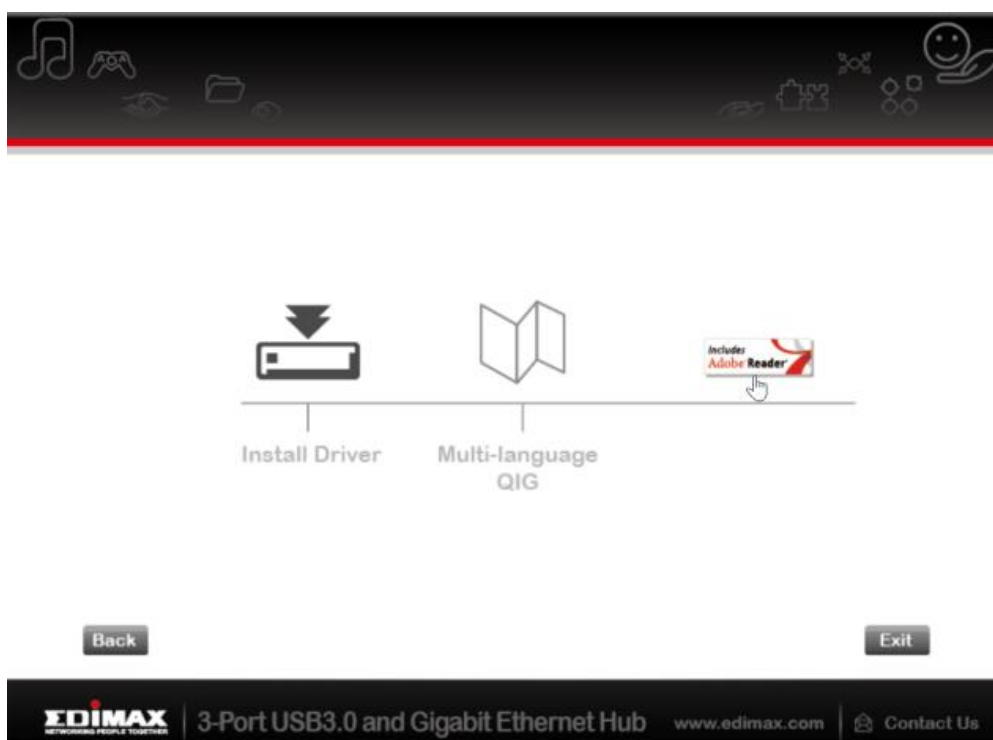
**3.** You will see the following “Preparing to Install...” pop-up window.




**4.** Click “Finish” to finish the driver installation



5. Click “Exit” to close the setup wizard.



 ***The multi-language QIG is also included on the CD-ROM. To open it click “Multi-language QIG”.***

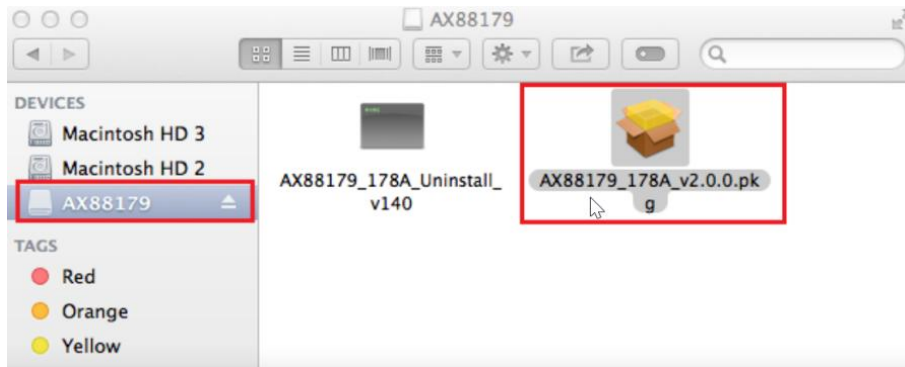


## II-2. Mac OS

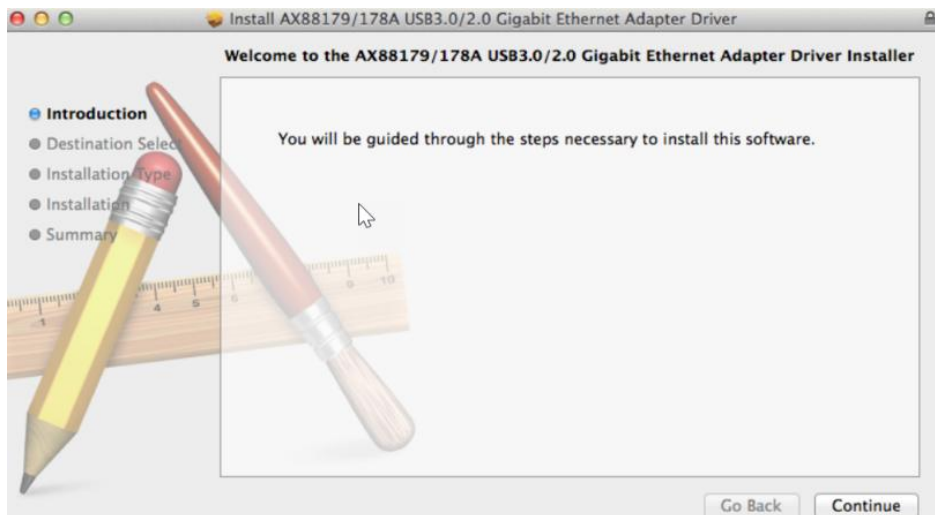
---

### Driver Installation

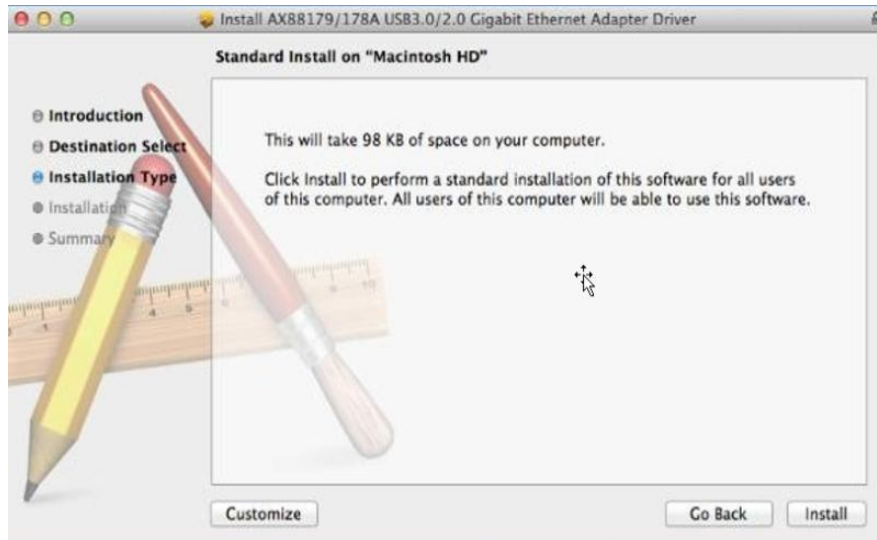
1. Click the “AX88179\_178A.dmg”, the following “AX88179” virtual disk will appear on the Desktop of your Mac OSX system (will be auto-removed after your Mac OSX system reboots).



2. Click the “AX88179\_178A\_vx.x.x.pkg” (“x.x.x” is driver revision number), and the following driver setup dialog will appear. “Click Continue” to start the installation and follow the instructions to continue the installation.



3. Click "Install" to continue the installation process.



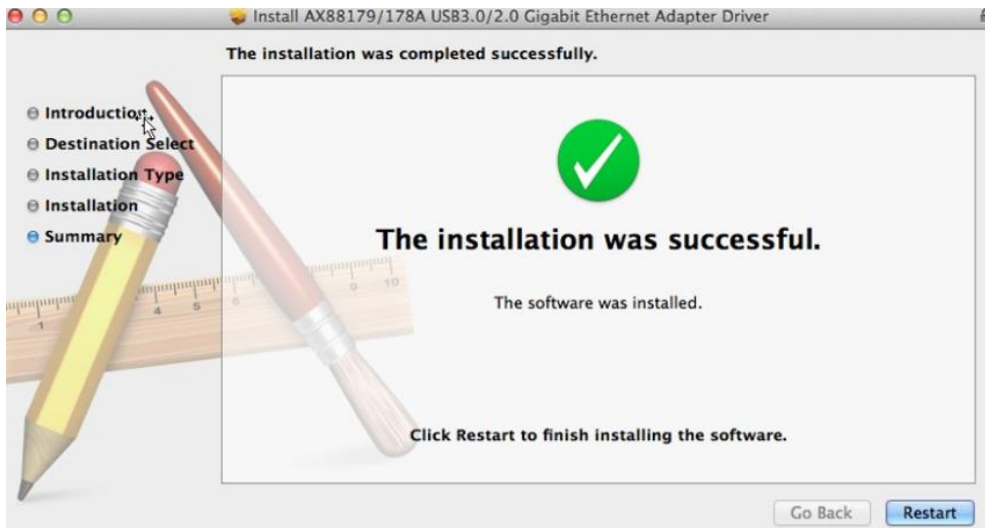
4. You might need to enter your user/password during the driver installation.



5. Click "Continue Installation" to continue the installation process.

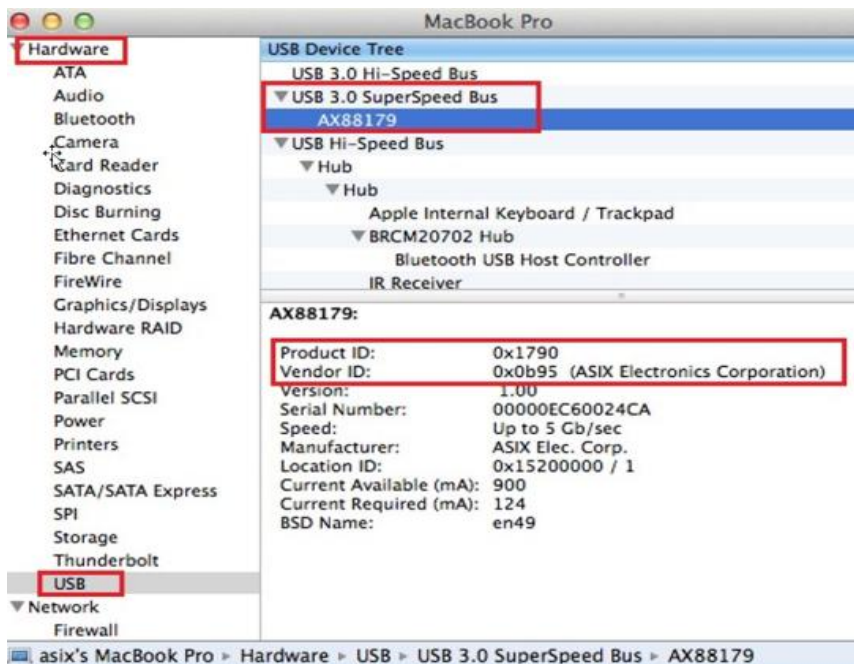


6. Click “Restart” to restart your Mac OSX system and finish the installation.



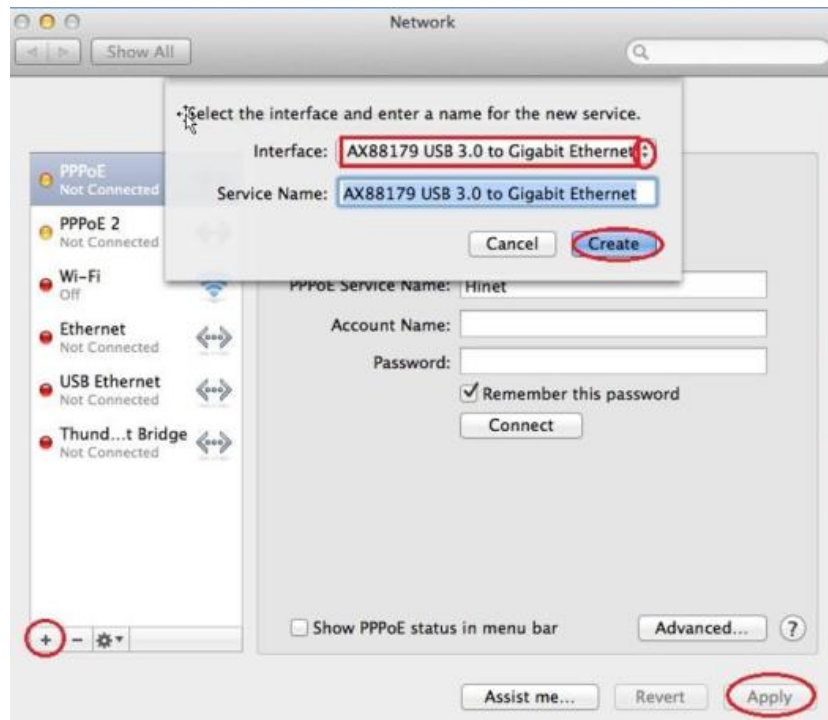
7. After booting up your Mac OSX system, plug your EU-4308 USB dongle onto the USB type C port of your Mac OSX system. Refer to the following information to double check that your USB dongle has been identified properly by your Mac OSX system and that the AX88179/AX88178A Mac OSX has been installed correctly.

- (1) You can check the Vendor/Product ID information of your USB dongle from here.

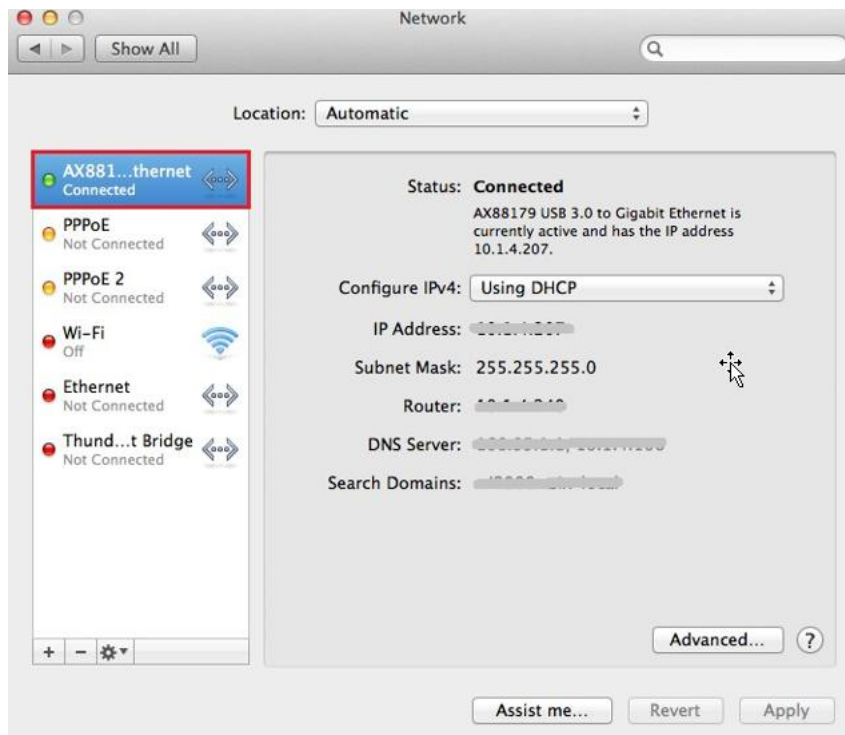


- (2) You can check the installed AX88179/AX88178A Mac OSX driver version information by running the “kextstat” command

8. Choose Apple menu, System Preferences, then click Network. Select the new “AX88179 USB 3.0 to Gigabit Ethernet” network interface and press “Create” followed by “Apply” for the new network interface to take effect.



9. The new “AX88179 USB 3.0 to Gigabit Ethernet” driver should be ready.



## Federal Communication Commission Interference Statement

This equipment has been tested and found to comply with the limits for a Class B digital device, pursuant to Part 15 of FCC Rules. These limits are designed to provide reasonable protection against harmful interference in a residential installation. This equipment generates, uses, and can radiate radio frequency energy and, if not installed and used in accordance with the instructions, may cause harmful interference to radio communications. However, there is no guarantee that interference will not occur in a particular installation. If this equipment does cause harmful interference to radio or television reception, which can be determined by turning the equipment off and on, the user is encouraged to try to correct the interference by one or more of the following measures:

1. Reorient or relocate the receiving antenna.
2. Increase the separation between the equipment and receiver.
3. Connect the equipment into an outlet on a circuit different from that to which the receiver is connected.
4. Consult the dealer or an experienced radio technician for help.

### FCC Caution

This device and its antenna must not be co-located or operating in conjunction with any other antenna or transmitter. This device complies with Part 15 of the FCC Rules. Operation is subject to the following two conditions: (1) this device may not cause harmful interference, and (2) this device must accept any interference received, including interference that may cause undesired operation. Any changes or modifications not expressly approved by the party responsible for compliance could void the authority to operate equipment.

### Federal Communications Commission (FCC) Radiation Exposure Statement

This equipment complies with FCC radiation exposure set forth for an uncontrolled environment. In order to avoid the possibility of exceeding the FCC radio frequency exposure limits, human proximity to the antenna shall not be less than 2.5cm (1 inch) during normal operation.

### Federal Communications Commission (FCC) RF Exposure Requirements

This EUT is compliance with SAR for general population/uncontrolled exposure limits in ANSI/IEEE C95.1-1999 and had been tested in accordance with the measurement methods and procedures specified in OET Bulletin 65 Supplement C. The equipment version marketed in US is restricted to usage of the channels 1-11 only. This equipment is restricted to *indoor* use when operated in the 5.15 to 5.25 GHz frequency range.

## R&TTE Compliance Statement

This equipment complies with all the requirements of DIRECTIVE 1999/5/EC OF THE EUROPEAN PARLIAMENT AND THE COUNCIL of March 9, 1999 on radio equipment and telecommunication terminal equipment and the mutual recognition of their conformity (R&TTE). The R&TTE Directive repeals and replaces in the directive 98/13/EEC (Telecommunications Terminal Equipment and Satellite Earth Station Equipment) As of April 8, 2000.

### Safety

This equipment is designed with the utmost care for the safety of those who install and use it. However, special attention must be paid to the dangers of electric shock and static electricity when working with electrical equipment. All guidelines of this and of the computer manufacture must therefore be allowed at all times to ensure the safe use of the equipment.

### EU Countries Intended for Use

The ETSI version of this device is intended for home and office use in Austria, Belgium, Bulgaria, Cyprus, Czech, Denmark, Estonia, Finland, France, Germany, Greece, Hungary, Ireland, Italy, Latvia, Lithuania, Luxembourg, Malta, Netherlands, Poland, Portugal, Romania, Slovakia, Slovenia, Spain, Sweden, Turkey, and United Kingdom. The ETSI version of this device is also authorized for use in EFTA member states: Iceland, Liechtenstein, Norway, and Switzerland.

### EU Countries Not Intended for Use

None

## EU Declaration of Conformity

- English:** This equipment is in compliance with the essential requirements and other relevant provisions of Directive 2014/30/EU, 2014/35/EU.
- Français:** Cet équipement est conforme aux exigences essentielles et autres dispositions de la directive 2014/30/EU, 2014/35/EU.
- Čeština:** Toto zařízení je v souladu se základními požadavky a ostatními příslušnými ustanoveními směrnic 2014/30/EU, 2014/35/EU.
- Polski:** Urządzenie jest zgodne z ogólnymi wymaganiami oraz szczególnymi warunkami określonymi Dyrektywą UE 2014/30/EU, 2014/35/EU.
- Română:** Acest echipament este în conformitate cu cerințele esențiale și alte prevederi relevante ale Directivei 2014/30/EU, 2014/35/EU.
- Русский:** Это оборудование соответствует основным требованиям и положениям Директивы 2014/30/EU, 2014/35/EU.
- Magyar:** Ez a berendezés megfelel az alapvető követelményeknek és más vonatkozó irányelveknek (2014/30/EU, 2014/35/EU).
- Türkçe:** Bu cihaz 2014/30/EU, 2014/35/EU. direktifleri zorunlu istekler ve diğer hükümlerle ile uyumludur.
- Українська:** Обладнання відповідає вимогам і умовам директиви 2014/30/EU, 2014/35/EU.
- Slovenčina:** Toto zariadenie spĺňa základné požiadavky a ďalšie príslušné ustanovenia smerníc 2014/30/EU, 2014/35/EU.
- Deutsch:** Dieses Gerät erfüllt die Voraussetzungen gemäß den Richtlinien 2014/30/EU, 2014/35/EU.
- Español:** El presente equipo cumple los requisitos esenciales de la Directiva 2014/30/EU, 2014/35/EU.
- Italiano:** Questo apparecchio è conforme ai requisiti essenziali e alle altre disposizioni applicabili della Direttiva 2014/30/EU, 2014/35/EU.
- Nederlands:** Dit apparaat voldoet aan de essentiële eisen en andere van toepassing zijnde bepalingen van richtlijn 2014/30/EU, 2014/35/EU.
- Português:** Este equipamento cumpre os requisitos essenciais da Directiva 2014/30/EU, 2014/35/EU.
- Norsk:** Dette utstyret er i samsvar med de viktigste kravene og andre relevante regler i Direktiv 2014/30/EU, 2014/35/EU.
- Svenska:** Denna utrustning är i överensstämmelse med de väsentliga kraven och övriga relevanta bestämmelser i direktiv 2014/30/EU, 2014/35/EU.
- Dansk:** Dette udstyr er i overensstemmelse med de væsentligste krav og andre relevante forordninger i direktiv 2014/30/EU, 2014/35/EU.
- suomen kieli:** Tämä laite täyttää direktiivien 2014/30/EU, 2014/35/EU. oleelliset vaatimukset ja muut asiaankuuluvat määräykset.

FOR USE IN 



---

### WEEE Directive & Product Disposal



At the end of its serviceable life, this product should not be treated as household or general waste. It should be handed over to the applicable collection point for the recycling of electrical and electronic equipment, or returned to the supplier for disposal.

## Declaration of Conformity

We, Edimax Technology Co., Ltd., declare under our sole responsibility, that the equipment described below complies with the requirements of the European R&TTE directives.

**Equipment: USB 3.0 Gigabit Ethernet Adapter**  
**Model No.: EU-4308**

The following European standards for essential requirements have been followed:

### Directives 2014/30/EU

EN 55032:2015 Class B  
EN 55024:2010  
EN 61000-4-2: 2009  
EN 61000-4-3: 2006+A1:2008+A2:2010  
EN 61000-4-4: 2012  
EN 61000-4-5: 2014  
EN 61000-4-6: 2014+AC:2015  
EN 61000-4-8: 2010  
EN 61000-4-11: 2004

### Directives 2014/35/EU

Safety (LVD) : IEC 60950-1:2005 (2<sup>nd</sup> Edition)+Am 1:2009+Am 2:2013  
EN 60950-1:2006+A11:2009+A1:2010+A12:2011+A2:2013

Edimax Technology Europe B.V.  
Fijenhof 2,  
5652 AE Eindhoven,  
The Netherlands

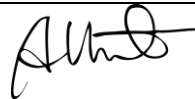
a company of :  
Edimax Technology Co., Ltd.  
No. 278, Xinhua 1st Rd.,  
Neihu Dist., Taipei City,  
Taiwan

### Signature:

Printed Name: Vivian Ma  
Title: Director  
Edimax Technology Europe B.V.

Date of Signature: June, 2017

Signature: \_\_\_\_\_



Printed Name: Albert Chang

Title: Director  
Edimax Technology Co., Ltd.





**EDIMAX**  
NETWORKING PEOPLE TOGETHER

The logo features the Greek letter sigma (Σ) as the first letter of 'EDIMAX'. A small red dot is positioned above the 'I'. The background is a dark grey band filled with various white line-art icons, including a handshake, musical notes, a smiley face, a game controller, and a computer monitor.